

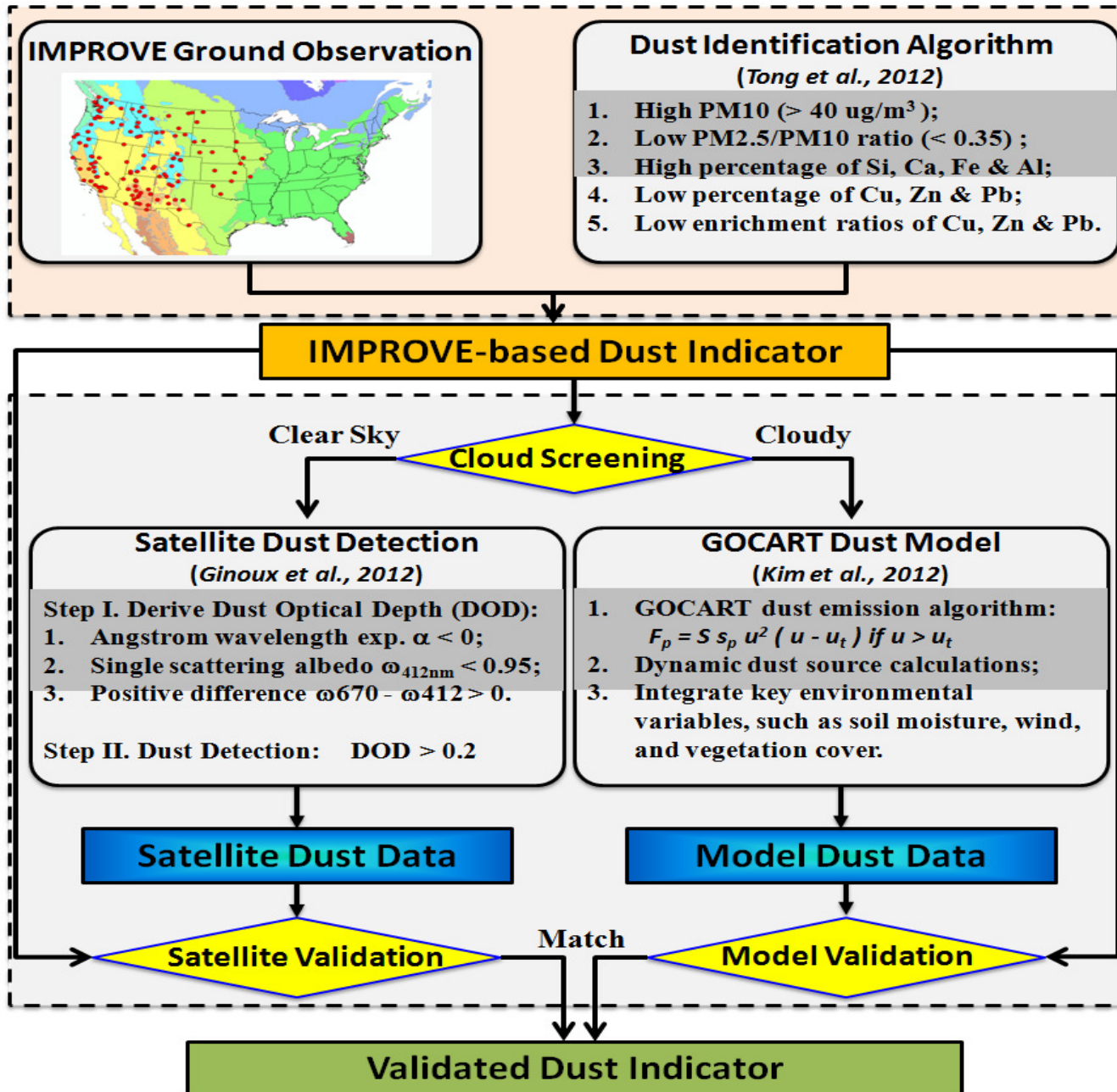
# NCA Dust Indicator

PI: Daniel Tong;

Co-Is: Dongchul Kim, Julian Wang, Thomas Gill & Huiyan Yang

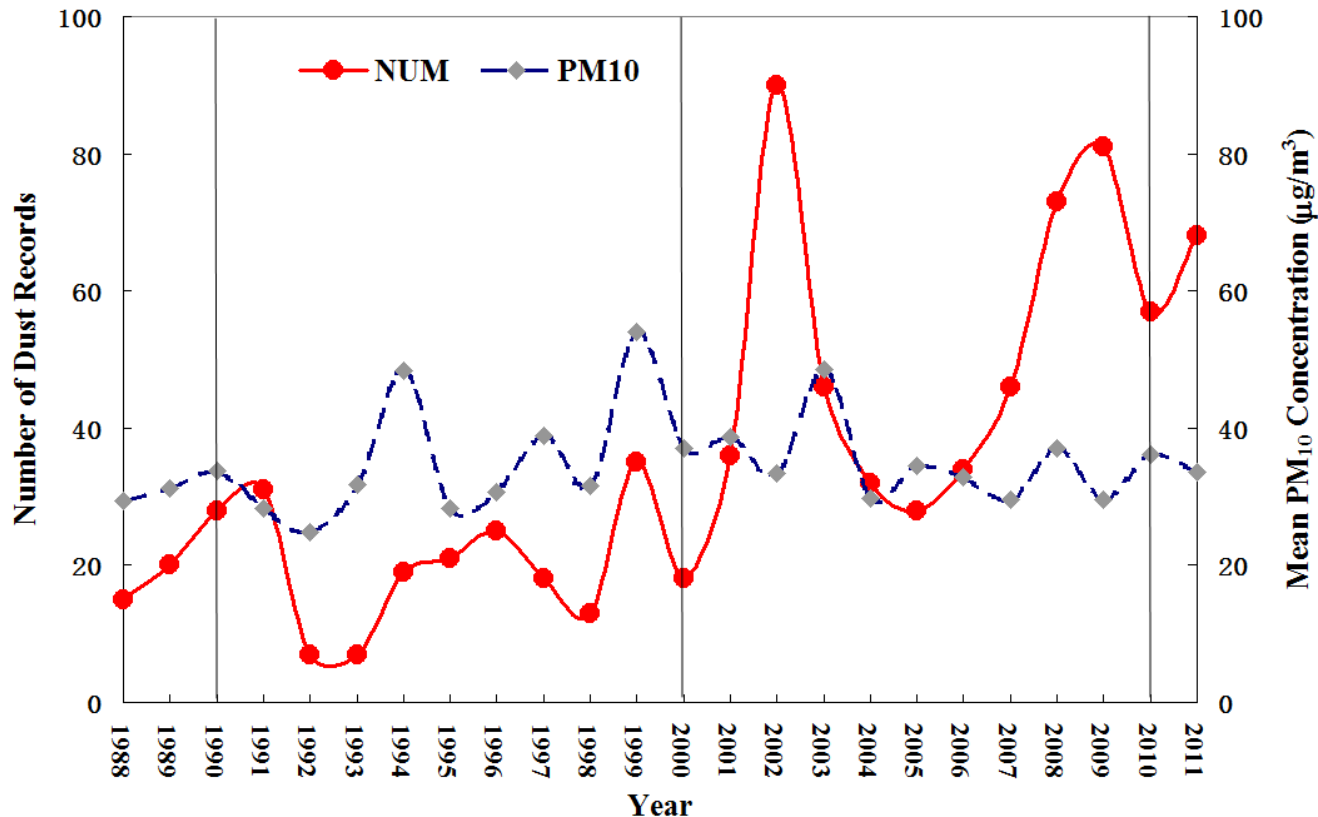
- ◆ Create a climate-quality indicator of local wind-blown dust storms originated within the U.S.
- ◆ Validate the dust records using satellite retrievals and model prediction.
- ◆ Assess long-term variability and trends in dust indicator at regional and national levels.

# Methodology



# Major Findings

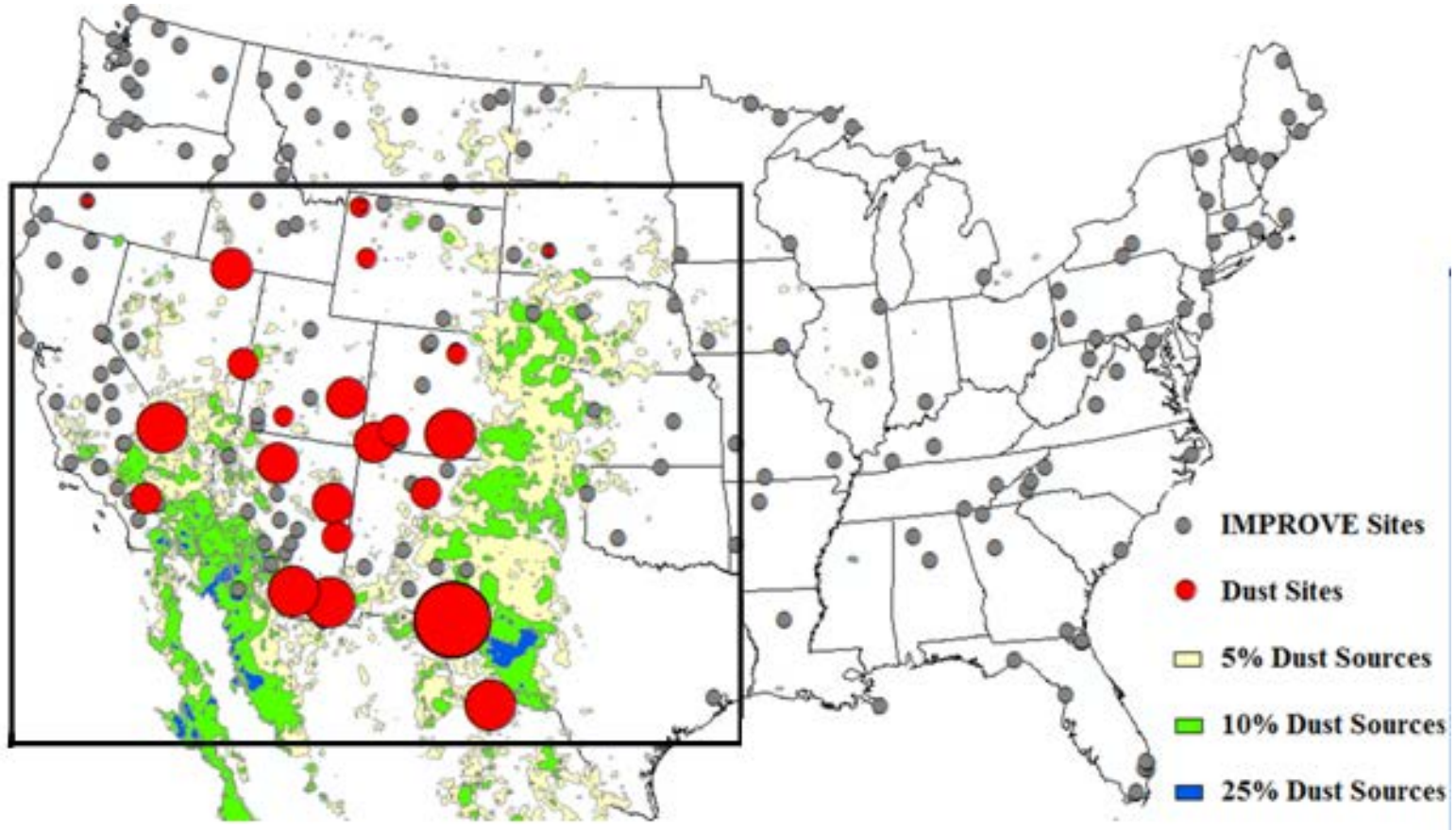
◆ Dust storms became more frequent in United States;



**The number of dust storms has more than doubled.  
Aerosol loading by dust storms increased.**

# Major Findings

◆ Consistent spatial patterns detected by satellite and ground observations.



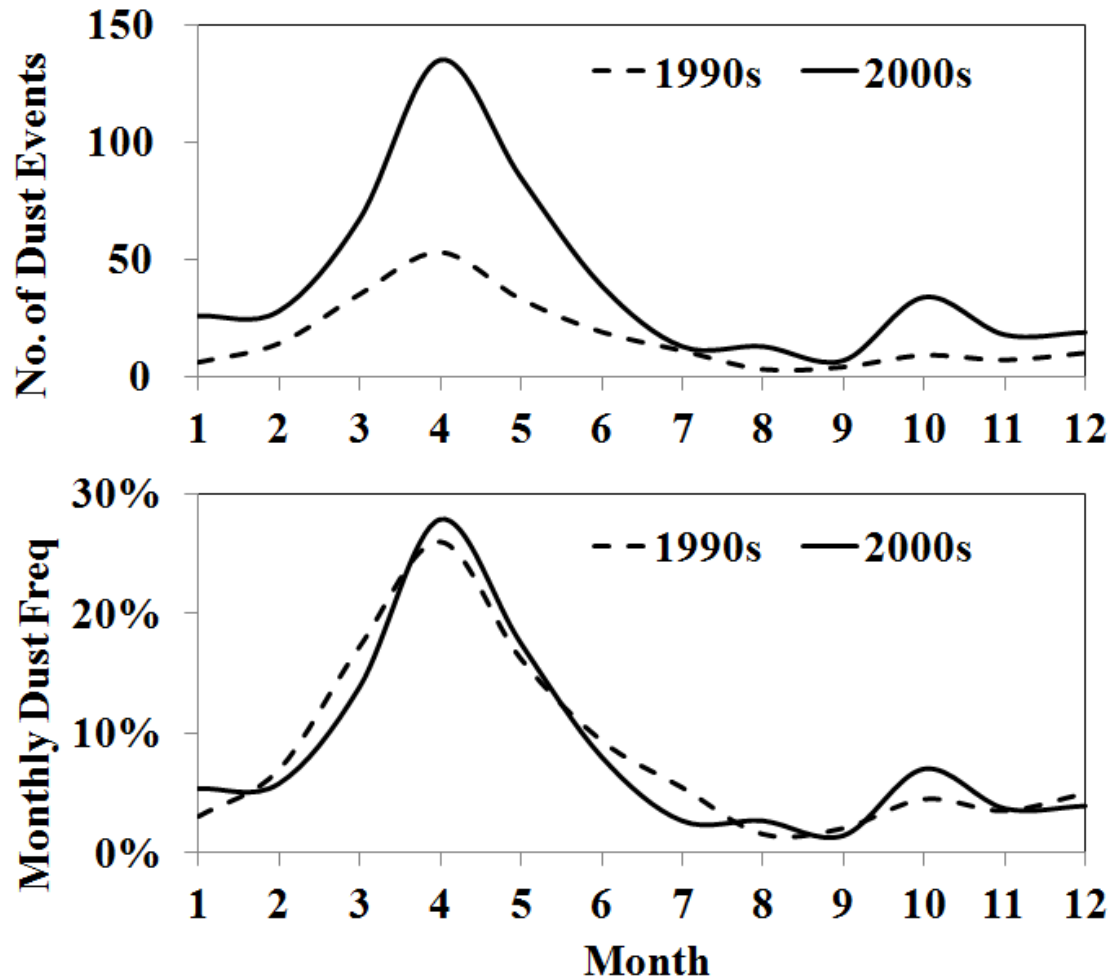
**Dust-active regions:**

1/29/2015

**10 states in four Deserts and Colorado Plateau**

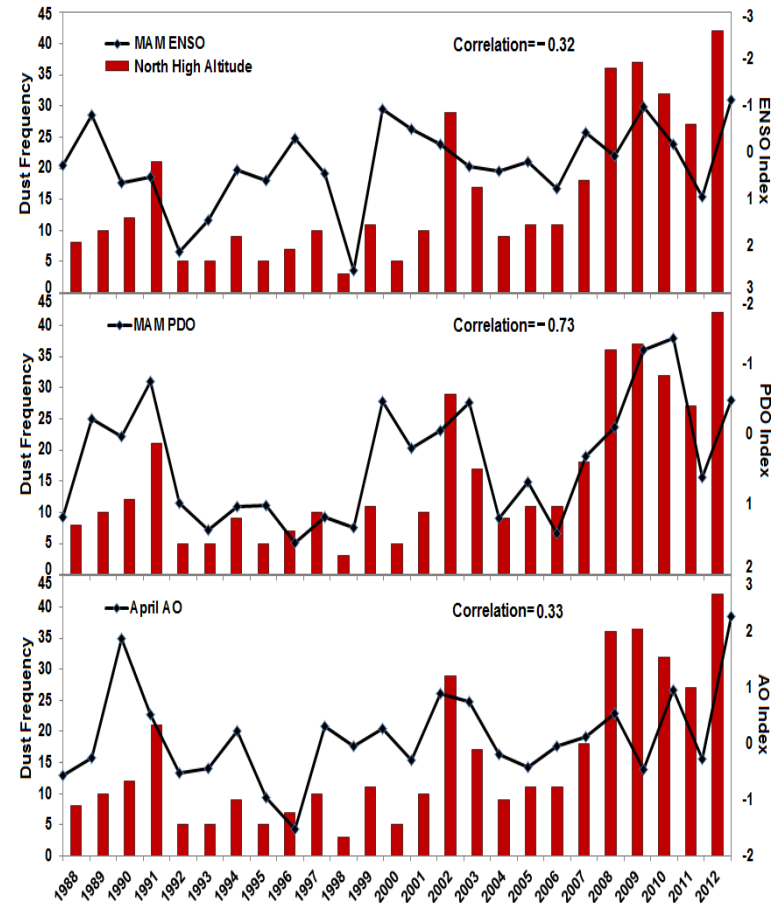
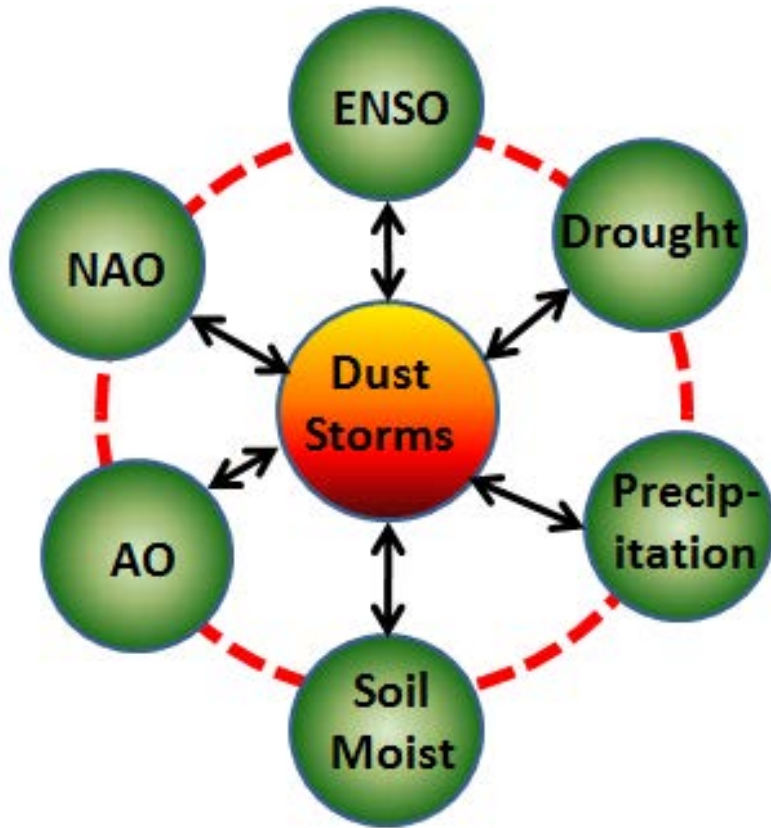
# Major Findings

- ◆ Dust intensification mostly in spring;
- ◆ The dusty season came later in the spring, due likely to earlier snow melting with warming.



# Major Findings

◆ Mechanism behind the dust increasing trend is unclear;

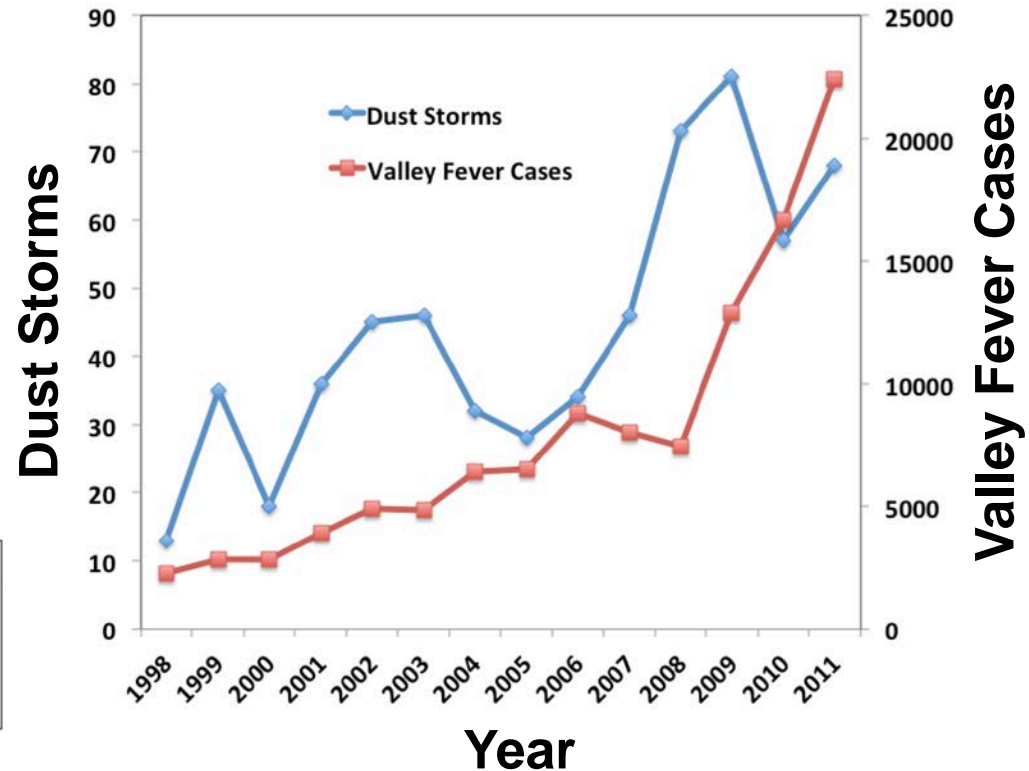
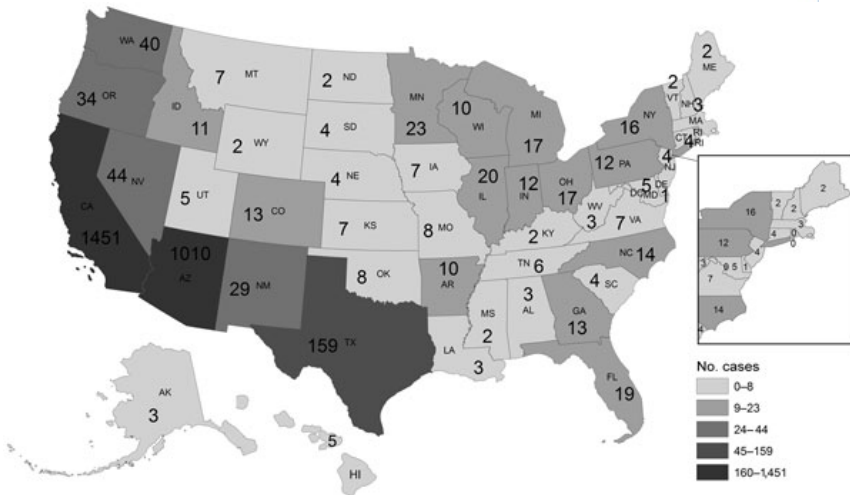
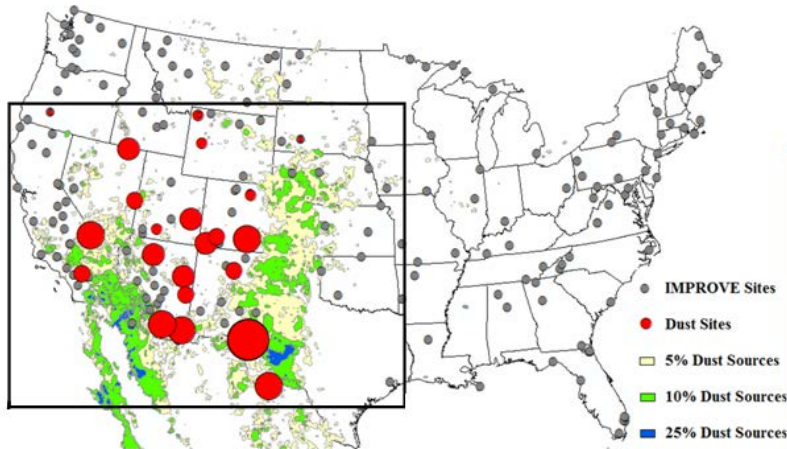


✓ Is the increasing trend an early indicator to another “Dust Bowl”?



# Dust Trend and Valley Fever

◆ The dust trend is correlated with the Valley Fever incidences;



✓ Will the dust trend lead to a valley fever outbreak?

1/29/2015

# Users and Data Dissemination

- ◆ **Soil Conservation: USDA and International Soil Conservation Society.**
- ◆ **Environmental Management: US EPA, Clark County Department of Air Quality, Maricopa Association of Governments, Bay Area Air Quality Management District, Texas Commission of Environmental Quality.**
- ◆ **Public Health: CDC (Valley Fever) and Southwestern States (early contact)**
- ◆ **Research Community: NASA GOCART / NU-WRF, NOAA NAQFC and HYSPLIT, EPA CMAQ;**
- ◆ **Peer-Reviewed Journal Publications: Two journal papers published; Three more to be submitted.**



# NCA Dust Data User Workshop

- ◆ **Time: June 9-10, 2015**
- ◆ **Location: The ESSIC Building, College Park, MD**
- ◆ **Participants: NCA Dust Indicator Team, and data users from EPA, USDA, NOAA, State and local environmental agencies.**
- ◆ **Contact: Daniel Tong [qtong@gmu.edu](mailto:qtong@gmu.edu) or 919-280-6656.**