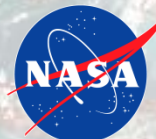


# GOES-R/JPSS Proving Ground Activities Future

Science Advisory Committee Meeting

26 – 28 August, 2014

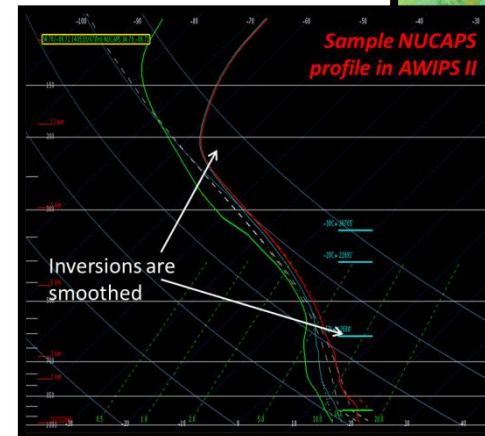
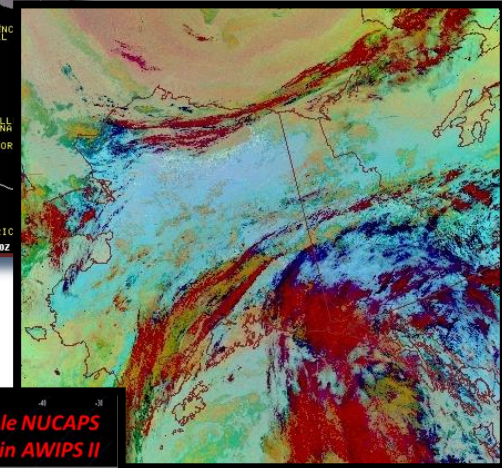
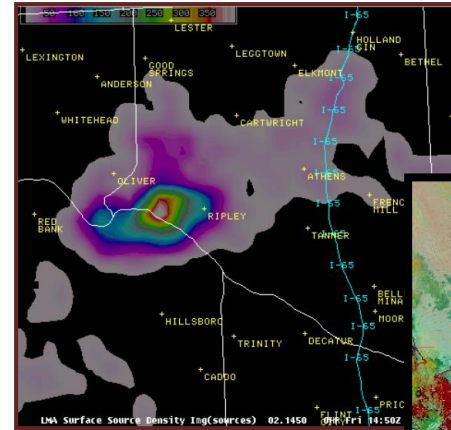
National Space Science and Technology Center, Huntsville, AL



# SPoRT Future Direction for GOES-R/JPSS PG

## Near-term plans

- Transition and assessment of tailored Total Lightning products to users in real time
- ABI-like imagery for WFOs (esp. W. and AK) and NCs
  - Hybrid, RGB, QPE, Aerosols
- Use of Passive Microwave (and derived soundings and products) for short-term anal.
  - NUCAPS, NESDIS Snowfall Rate
- Product support in CSPP



# SPoRT Future Direction for GOES-R/JPSS PG

## Long-term Plans

- Support for TL applications and display tools within demonstrations and training
- Himawari as demonstration of ABI (QPE and RGBs)
- Support additional products outside of baseline
  - RGBs, “Future” products, AWGs
- Test and evaluate GOES-R/JPSS data (fusion & display)

