



# Eastern Region Headquarters: SPoRT/ER Collaborations

Dave Radell

Eastern Region Scientific Services Division

August 31, 2011

[david.radell@noaa.gov](mailto:david.radell@noaa.gov)



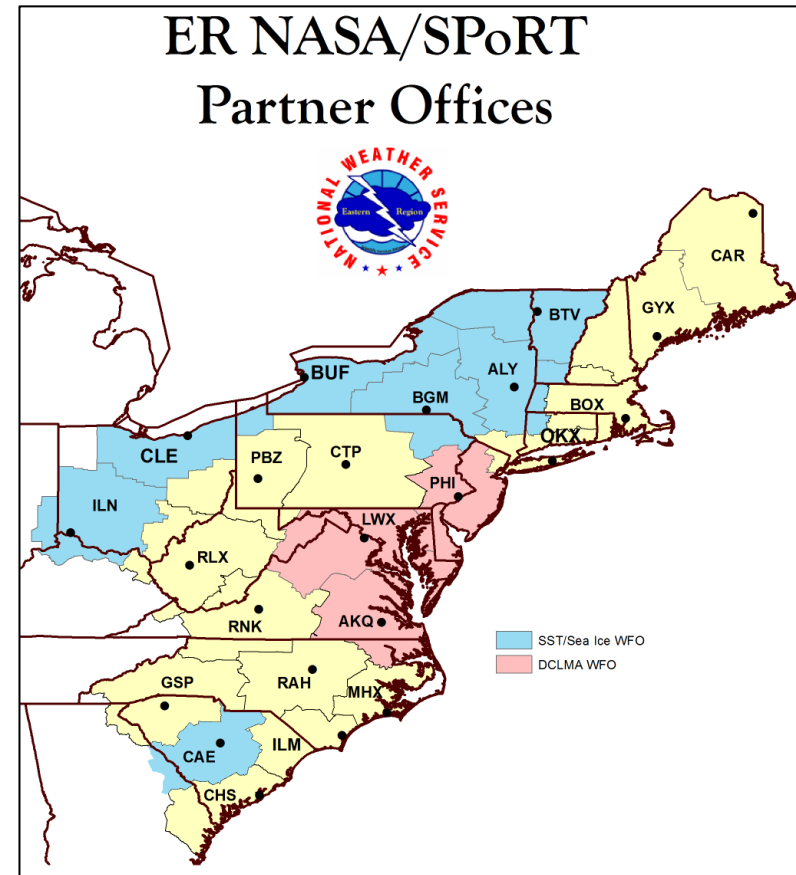


# Current ER/SPoRT Projects



- MODIS SST/Lake Ice/WRF  
Local Ensemble
- DC Lightning Mapping  
Array

Uses: Operational diagnosis and  
short term forecasting





# From the AFDs

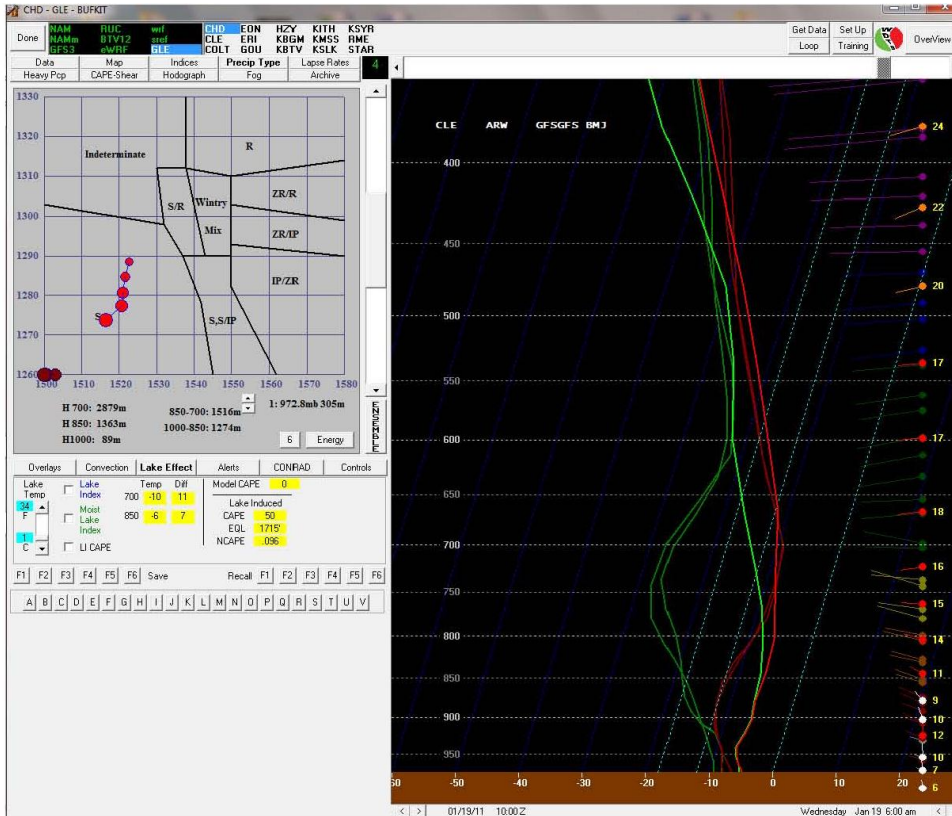


BOTH GFS AND NAM BUFR SOUNDINGS SHOW CONTINUED MOIST LOW-LEVEL CONDITIONS WITH LAKE INDUCED INVERSION HEIGHTS EXTENDING UP THROUGH ROUGHLY 7 KFT. WITH CURRENT LAKE TEMPS HOVERING ROUGHLY 3C PER LATEST SPORT SATELLITE DATA...EXPECT MODERATE LAKE DELTA TS AND THE DIFFERENCE APPROACHES 20C.



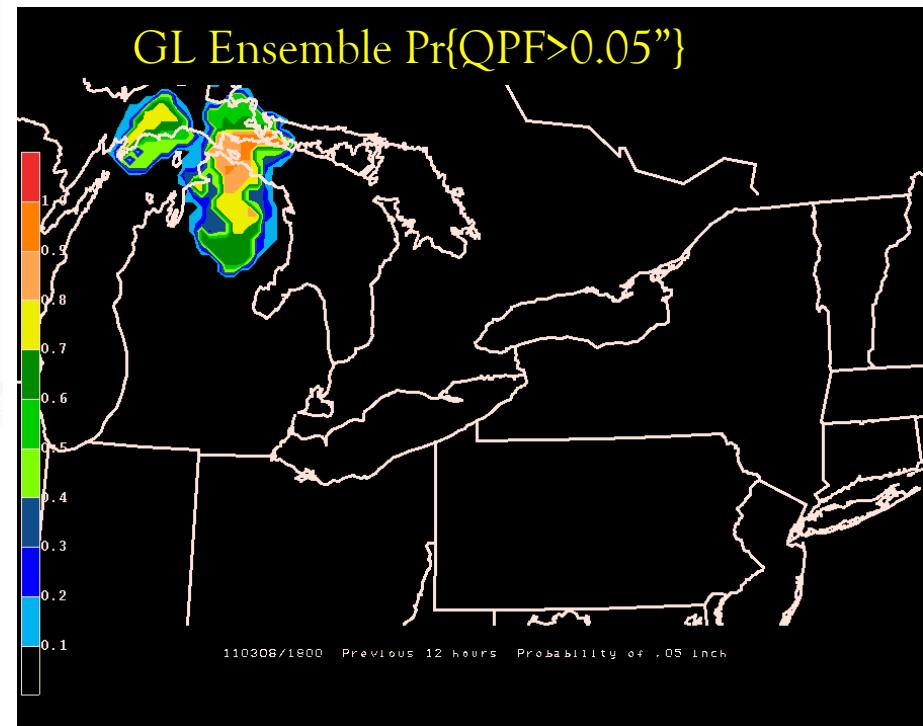


# ER Great Lakes Ensemble



CLE ARW 0600Z Cycle 1/19 (CHD\*.buz file)

In addition to diagnostic use, the SST/Ice Cover product is integrated into the WRF-EMS for use in local modeling/NE ensemble.







# Moving Forward....



ER continues to seek new collaboration(s) to support the following three Regional focus areas, plus the GOES-R PG:

**ER Focus:** Enhanced Short Term Forecasting/DSS

**ER Focus:** Aviation Forecasting

**ER Focus:** Hydrology

## **GOES-R Proving Ground**

Lightning Algorithms/Forecasts

RGB Air Mass

Aviation Related Products (Fog, Ceiling/Vis., Convection)